

SPACE RECYCLE

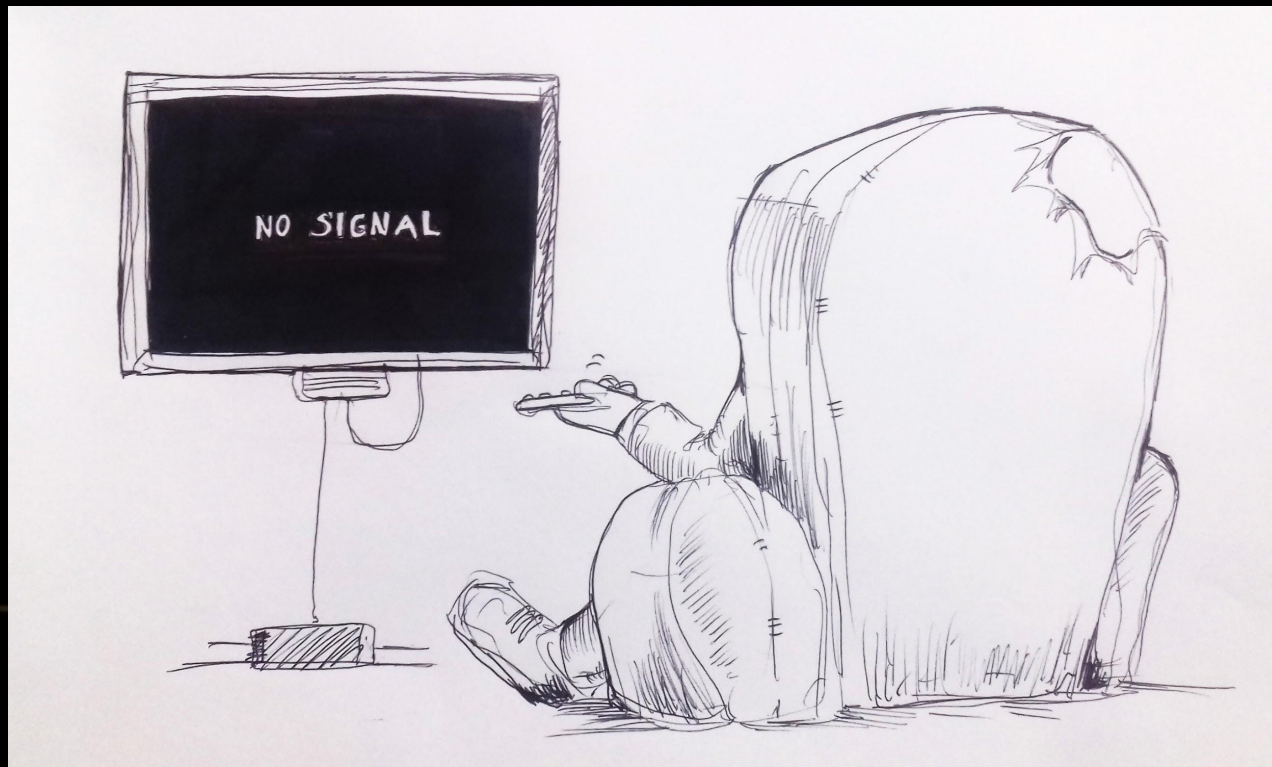


FACTS

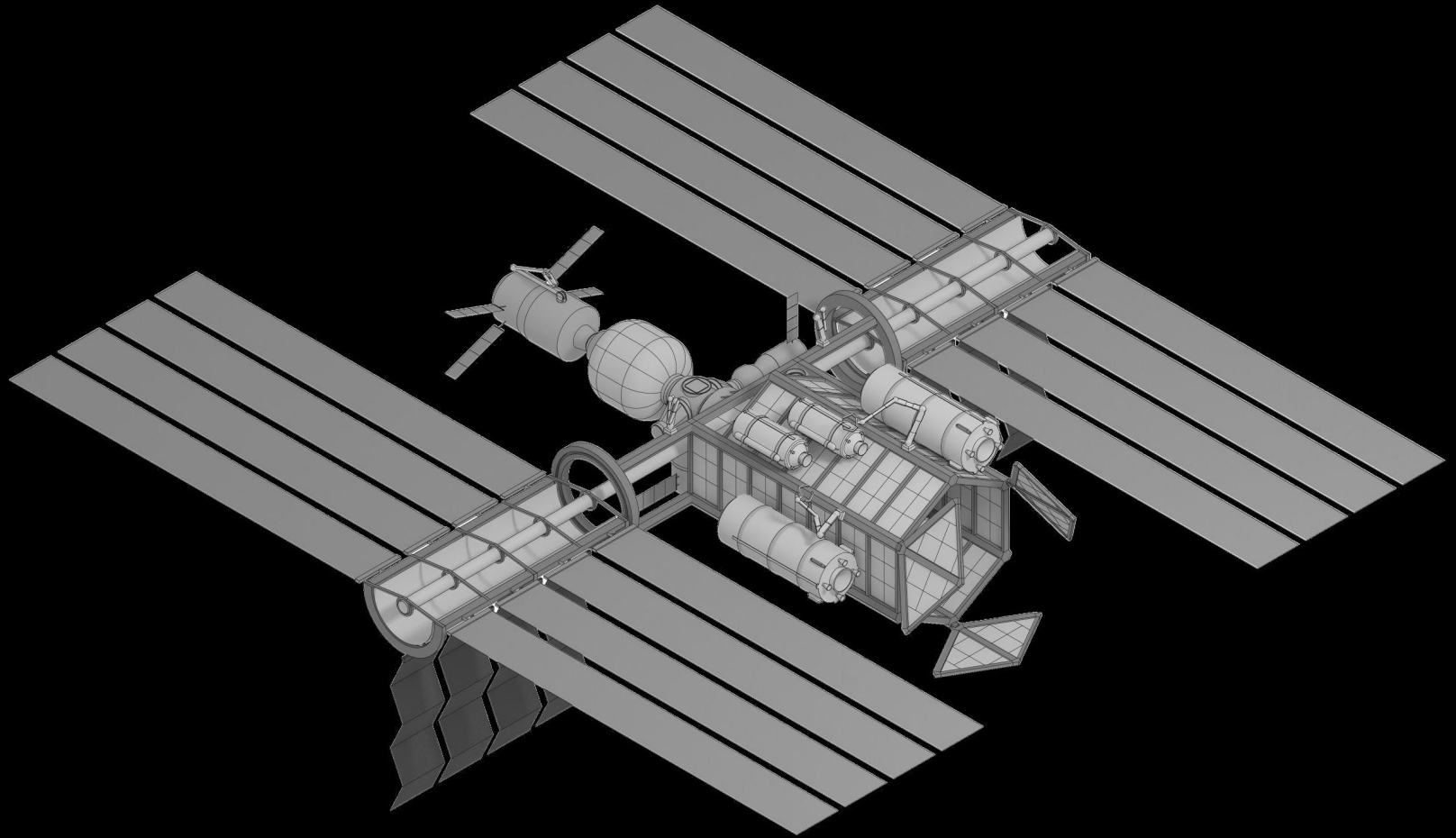
29000 objects > 10 cm

750000 objects from 1 to 10 cm

166 million objects from 1 mm to 1 cm



SOLUTION



Station for Orbital Debris Recycling

TARGETS



ATLAS V

**2316kg
Empty Mass
+Propellant**



КОСМОС

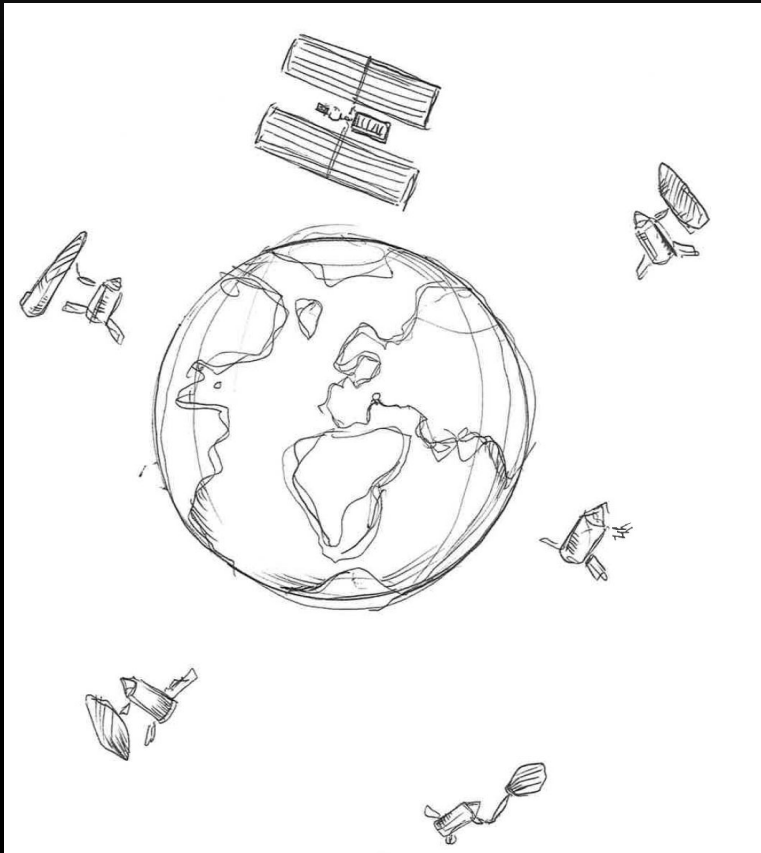
**2316kg
Empty Mass
+Propellant**



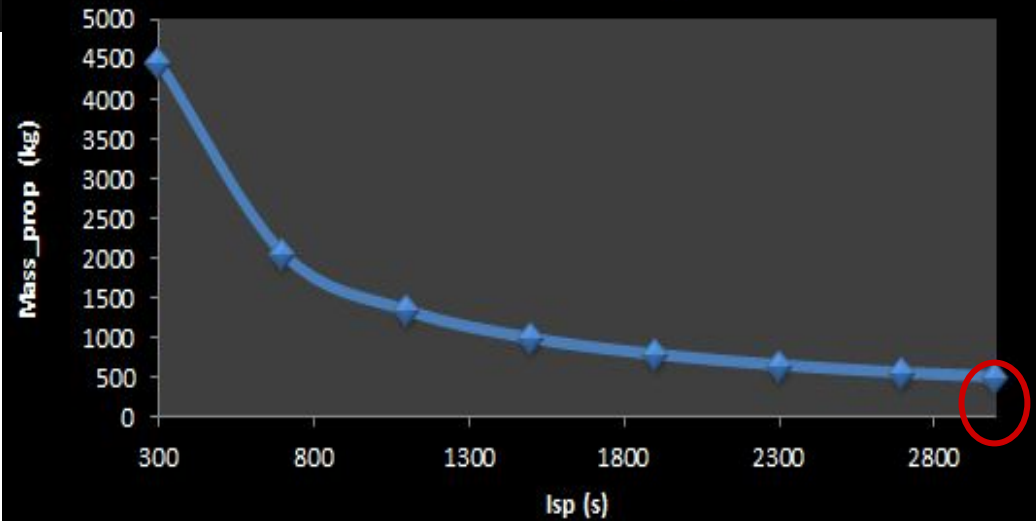
ARIANE 5

**1435kg
Empty Mass
+Propellant**

HOW? ATV



Isp vs Mass_prop



- Isp chemical around 300s
- Isp electrical around 3000s
- Selection of EP

VALUE STREAMS

Space debris

Primarily large
rocket bodies

>1000 tons already

ORDER station

BREAK DOWN

SEPARATE

PROCESS

10-50 tons/year

Structural
members &
feedstock
5-25 tons/year

Propellant
1-5 tons/year

REMOVE
DANGER

10-50 tons/year

Mars mission

Moon base

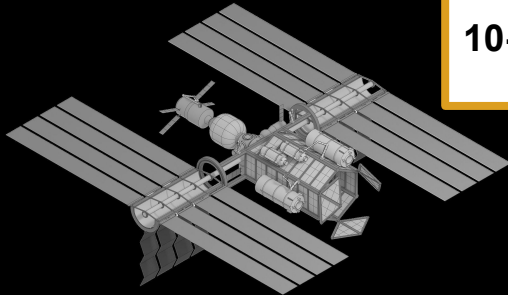
LEO usage

Maintain orbit
Enlarge station

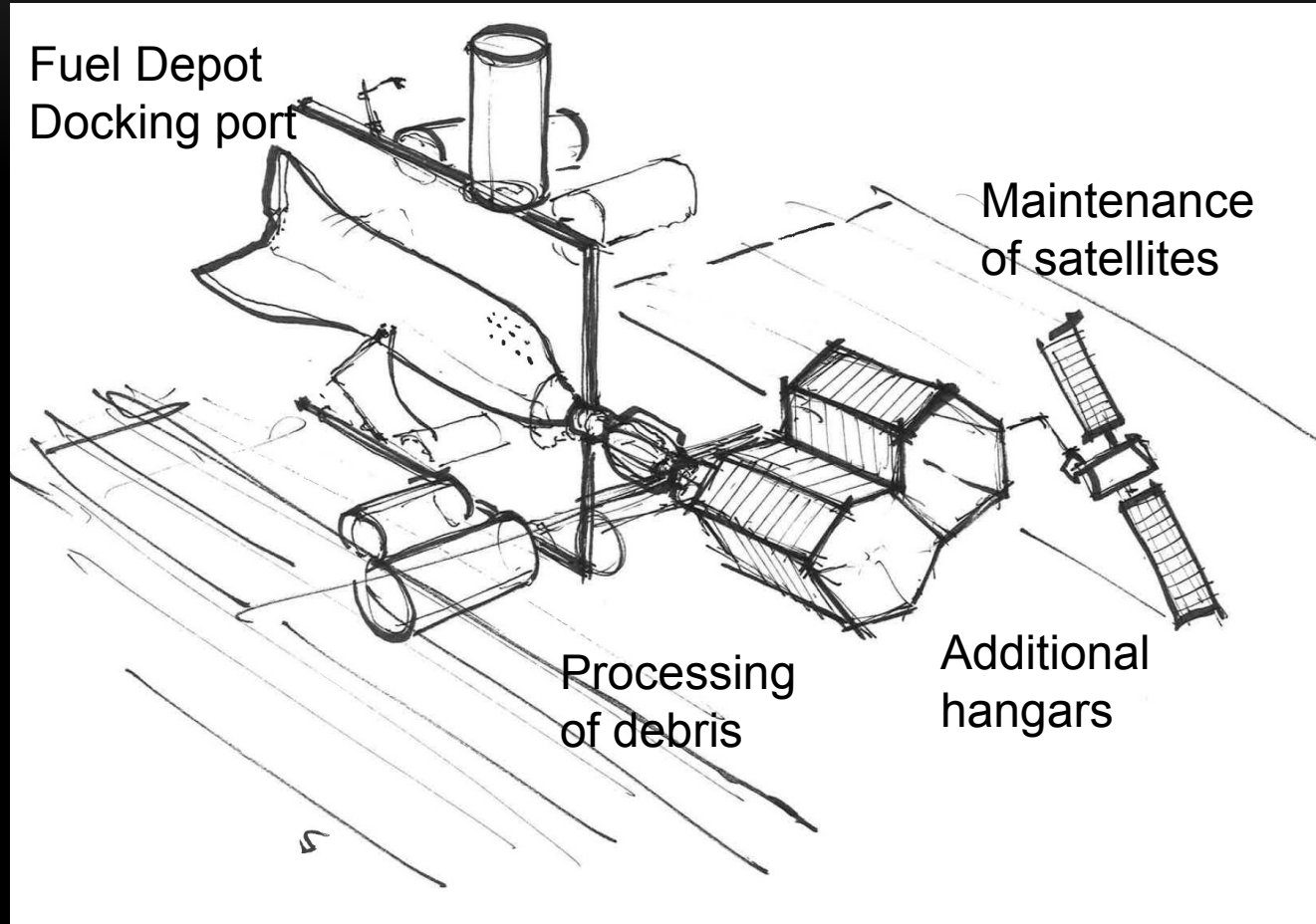
CREATE VALUE

10 M€/ton
60-300 M€/year

SELL GOODS



EXPANSION OF THE STATION



International Cooperation



Thank you

